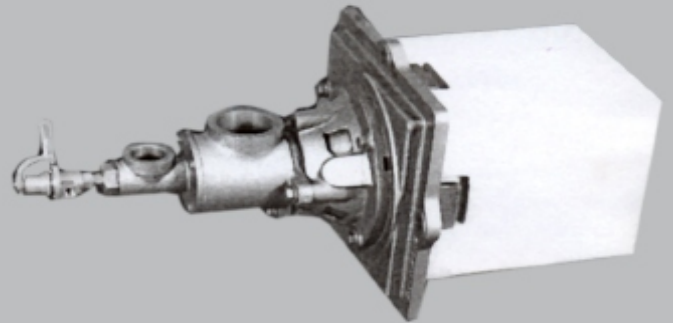


# CONTITHERM DUAL FUEL BURNER SERIES 62

## SALIENT FEATURES

- ✳ **CONSIDERABLE FUEL SAVING COMPARED TO OTHER CONVENTIONAL BURNERS**
- ✳ **NO MOVING PARTS AND HENCE REDUCED MAINTENANCE**
- ✳ **EFFECTIVE OIL ATOMISATION DUE TO SEPERATE ATOMISING AIR INLET**
- ✳ **OIL CONTROL BY A SPECIAL MICROTROL OIL VALVE**
- ✳ **INTERNAL PARTS EASILY REMOVABLE FOR CLEANING**
- ✳ **FIRST CHOICE OF ORIGINAL EQUIPMENT MANUFACTURERS**



## CONTITHERM

**SERIES 62 DUAL FUEL BURNERS** are designed to give maintenance free operation using heavy oil, light oil or gas. It has a heavy cast iron body of clean design that avoids clogging even when used on tough jobs such as forge furnaces using heavy oil.

### BURNER OPERATION

Oil with a viscosity of 70 to 90 seconds Redwood I and a pressure of 10 to 15 psi, should be supplied at the burner inlet. The atomising air pressure at the burner may be as low as 25" WG when using light distillate oils, 38" WG when using heavy oil. The 62 SERIES BURNER can operate on any gas of 500 to 3200 BTU per cubic foot of heating value. Switching from gas to oil operation or oil to gas, may be done quickly without furnace shut down,

the other. While using the burner for gas and oil, suitable tight shut off valves should be provided down stream of the atomising air isolating valve. This tight shut off valve is to be kept closed while using gas to prevent gas leakage through the atomising air line.

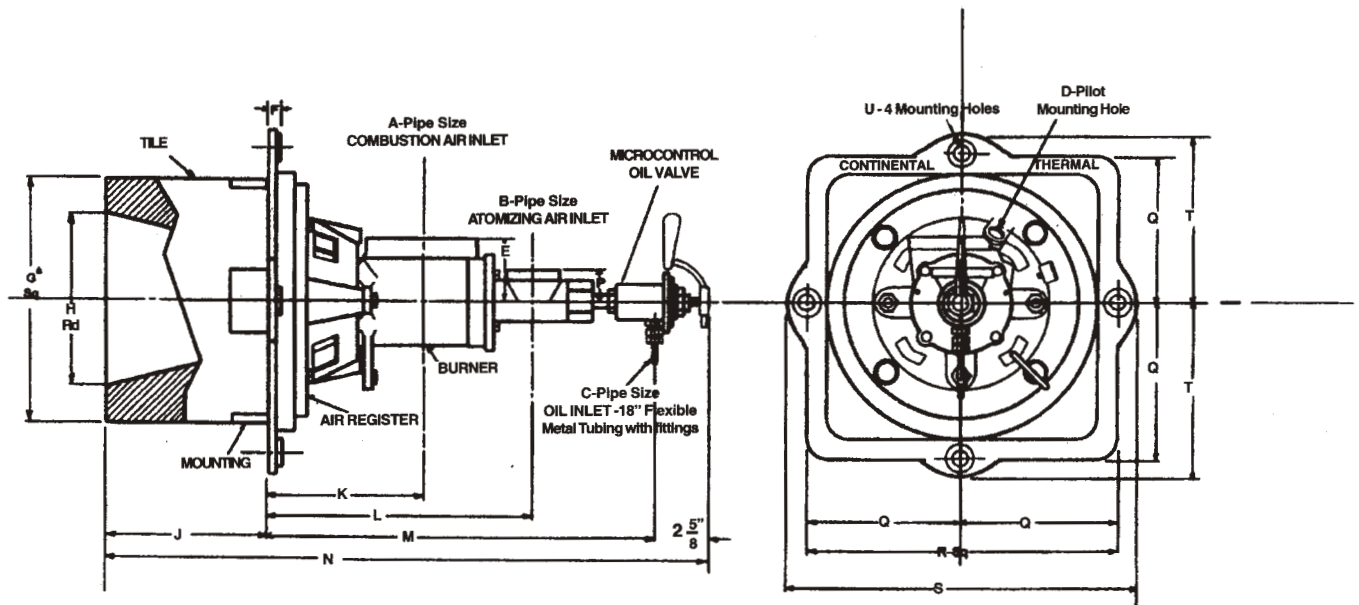
### BURNER CONSTRUCTION

The heavy cast iron body can stand much abuse. All internal parts are machined. The smooth surfaces stay free of oil deposits and dirt, thus greatly minimising the need of cleaning. Oil is put through the burner in a straight passage having a large cross sectional area, permitting visual inspection for clogging and easy clean - out if necessary. The burner oil control is achieved through Microtrol oil Valve, a non plugging V-port oil valve which produces small and uniform flow rate changes throughout the 180° sweep of the control handle.

## TOTAL AIR CAPACITIES IN CFH.

| BURNER SIZE  |                                      | 62-3 | 62-4 | 62-5   |
|--------------|--------------------------------------|------|------|--------|
| AIR PRESSURE | COMBUSTION & ATOMISING AIR AT 25" WG | 5235 | 6350 | 11280  |
|              | OIL IN LITRES / HR                   | 13   | 15   | 28     |
| AT BURNER    | COMBUSTION & ATOMISING AIR AT 38" WG | 6500 | 7930 | 14,000 |
|              | OIL IN LITRES / HR                   | 16.5 | 20   | 35     |

We reserve the right to make changes in specifications and constructional features as a result of continuous development and improvement



| Burner Size | DIMENSIONS IN INCHES<br>ALL DIMENSIONS EXCEPT MOUNTING HOLES ARE FOR ESTIMATION PURPOSE ONLY |       |     |        |         |       |                |         |    |        |        |        |        |       |       |        |        |        |       |    | WT IN KGS |
|-------------|--|-------|-----|--------|---------|-------|----------------|---------|----|--------|--------|--------|--------|-------|-------|--------|--------|--------|-------|----|-----------|
|             | A  | B     | C   | D      | E       | F     | G <sup>△</sup> | H       | J  | K      | L      | M      | N      | P     | Q     | R      | S      | T      | U     |    |           |
| 62-3        | 1 1/2  | 1     | 3/8 | 1 1/64 | 1 15/16 | 9/16  | 9              | 6 11/16 | 6  | 5 5/8  | 8 5/8  | 12 3/4 | 21 3/8 | 1 1/4 | 5 7/8 | 11 3/4 | 13 1/2 | 6 3/4  | 11/16 | 29 |           |
| 62-4        | 2  | 1     | 3/8 | 1 1/64 | 2 13/16 | 9/16  | 9              | 6 11/16 | 6  | 6 3/16 | 10 1/8 | 14 1/2 | 23 1/8 | 1 1/2 | 5 7/8 | 11 3/4 | 13 1/2 | 6 3/4  | 11/16 | 34 |           |
| 62-5        | 2 1/2  | 1 1/2 | 3/8 | 1 9/64 | 3 3/8   | 11/16 | 12             | 9 1/12  | 13 | 7 9/16 | 12 5/8 | 17     | 32 5/8 | 1 3/4 | 7 5/8 | 15 1/4 | 17 1/8 | 8 9/16 | 13/16 | 83 |           |

△ : OPENING IN FURNACE SHELL OR OUTER WALL MUST BE 1/2" LARGER THAN DIMENSION INDICATED TO ALLOW FOR MOUNTING PLATE FILET AND DRAFT

**RAY ENTERPRISES**

Plot No.150, 'S' Block, M.I.D.C., Bhosari, Pune - 411 026.  
 Telephone: (+91)-(20)-27129290 Mobile: (+91)- 7410077911, 9890007000  
 Email: rayenterprises@hotmail.com / Website: www.rayenterprisespune.com